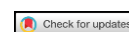


Role and Applications of Promethium Nanoparticles in Human Cancer Cells, Tissues and Tumors Treatment

Scientific Modelling and Research
Vol. 4, No. 1, 8-14, 2019
e-ISSN: 2523-952X



Corresponding Author

Alireza Heidari¹

Katrina Schmitt²

Maria Henderson³

Elizabeth Besana⁴

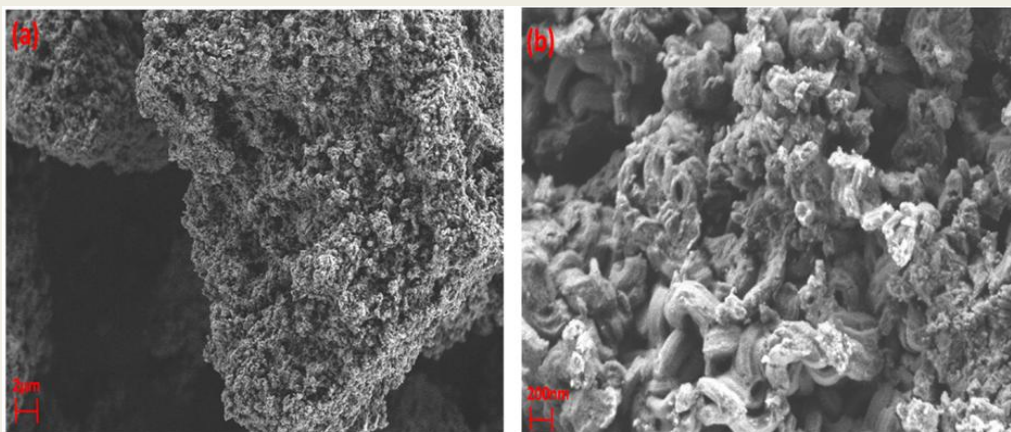
¹Faculty of Chemistry, California South University and American International Standards Institute, Irvine, USA.

Email: Alireza.Heidari@calsu.us

^{2,3,4}Faculty of Chemistry, California South University, USA.

ABSTRACT

Promethium nanoparticles absorb energy of descendent light and generate some heat in the particle. The generated heat transferred to the surrounding environment and leads to increase in temperature of adjacent points to nanoparticles. Heat variations can be obtained by heat transfer equation. When Promethium nanoparticles are subjected to descendent light, a part of light scattered (emission process) and the other part absorbed (non-emission process). The amount of energy dissipation in non-emission process mainly depends on material and volume of nanoparticles and it can be identified by absorption cross section. At the other hand, emission process which its characteristics are depend on volume, shape and surface characteristics of nanoparticles explains by scattering cross section. Sum of absorption and scattering processes which lead to light dissipation is called extinction cross section. In optothermal human cancer cells, tissues and tumors treatment, the descendent laser light stimulate resonance of surface Plasmon of metallic nanoparticles and as a result of this process, the absorbed energy of descendent light converse to heat in nanoparticl. The produced heat devastates tumor tissue adjacent to nanoparticles without any hurt to sound tissu. Regarding the simplicity of ligands connection to Promethium nanoparticles for targeting cancer cells, these nanoparticles are more appropriate to use in optothermal human cancer cells, tissues and tumors treatment. In the current paper, thermoplasmonic characteristics of spherical, core-shell and rod Promethium nanoparticles are investigated. To calculate the generated heat in Promethium nanoparticles, COMSOL software which works by Finite Element Method (FEM) was used.



Scanning Electron Microscope (SEM) image of Promethium nanoparticles with 50000x zoom.

Keywords: Promethium nanoparticles, Scanning electron microscope (SEM), 3D finite element method (FEM), Heat transfer equation, Optothermal, Heat distribution, Thermoplasmonic, Promethium nanorods, Human cancer cells, Tissues and tumors treatment, Simulation, Synchrotron radiation, Emission, Function, Beam energy.

DOI: 10.20448/808.4.1.8.14

Citation | Alireza Heidari; Katrina Schmitt; Maria Henderson; Elizabeth Besana (2019). Role and Applications of Promethium Nanoparticles in Human Cancer Cells, Tissues and Tumors Treatment. Scientific Modelling and Research, 4(1): 8-14.

Copyright: This work is licensed under a [Creative Commons Attribution 3.0 License](https://creativecommons.org/licenses/by/3.0/)

Funding: This research was supported by an American International Standards Institute (AISI) Future Fellowship Grant FT1201009373475.

Competing Interests: The authors declare that they have no competing interests.

History: Received: 4 September 2019/ Revised: 10 October 2019/ Accepted: 8 November 2019/ Published: 17 December 2019

Publisher: Online Science Publishing

Highlights of this paper

- Explanation and Calcification of Synchrotron Radiation Advantages, Effects and Effectiveness on Human Cancer Cells, Tissues and Tumors Treatment Process.
- Study of Nanoparticles Delivery Mechanism in Human Cancer Cells, Tissues and Tumors.
- Investigation of Interaction between Nanoparticles and Synchrotron Radiation in Human Cancer Cells, Tissues and Tumors.

1. INTRODUCTION

In recent decade, metallic nanoparticles have been widely interested due to their interesting optical characteristics [1-8]. Resonances of surface Plasmon in these nanoparticles lead to increase in synchrotron radiation emission as a function of the beam energy scattering and absorption in related frequency [9, 10]. Synchrotron radiation emission as a function of the beam energy absorption and induced produced heat in nanoparticles has been considered as a side effect in plasmonic applications for a long time [11-15]. Recently, scientists find that thermoplasmonic characteristic can be used for various optothermal applications in cancer, nanoflows and photonic [16]. In optothermal human cancer cells, tissues and tumors treatment, the descendent laser light stimulate resonance of surface Plasmon of metallic nanoparticles and as a result of this process, the absorbed energy of descendent light converse to heat in nanoparticles [1-16]. The produced heat devastates tumor tissue adjacent to nanoparticles without any hurt to sound tissues [15, 16]. Regarding the simplicity of ligands connection to Promethium nanoparticles for targeting cancer cells, these nanoparticles are more appropriate to use in optothermal human cancer cells, tissues and tumors treatment [16]. In the current paper, thermoplasmonic characteristics of spherical, core-shell and rod Promethium nanoparticles are investigated.

2. HEAT GENERATION IN SYNCHROTRON RADIATION EMISSION AS A FUNCTION OF THE BEAM ENERGY-PROMETHIUM NANOPARTICLES INTERACTION

When Promethium nanoparticles are subjected to descendent light, a part of light scattered (emission process) and the other part absorbed (non-emission process). The amount of energy dissipation in non-emission process mainly depends on material and volume of nanoparticles and it can be identified by absorption cross section. At the other hand, emission process which its characteristics are depend on volume, shape and surface characteristics of nanoparticles explains by scattering cross section. Sum of absorption and scattering processes which lead to light dissipation is called extinction cross section.

Promethium nanoparticles absorb energy of descendent light and generate some heat in the particle. The generated heat transferred to the surrounding environment and leads to increase in temperature of adjacent points to nanoparticles. Heat variations can be obtained by heat transfer equation.

3. SIMULATION

To calculate the generated heat in Promethium nanoparticles, COMSOL software which works by Finite Element Method (FEM) was used. All simulations were made in 3D. Firstly, absorption and scattering cross

section areas were calculated by optical module of software. Then, using heat module, temperature variations of nanoparticles and its surrounding environment were calculated by data from optical module. In all cases, Promethium nanoparticles are presented in water environment with dispersion coefficient of 1.84 and are subjected to flat wave emission with linear polarization. Intensity of descendent light is $1 \text{ mW}/\mu\text{m}^2$. Dielectric constant of Promethium is dependent on particle size.

Firstly, calculations were made for Promethium nanospheres with radius of 5, 10, 15, 20, 25, 30, 35, 40, 45 and 50 nanometers. The results show that by increase in nanoparticles size, extinction cross section area increases and maximum wavelength slightly shifts toward longer wavelengths. The maximum increase in temperature of nanospheres in surface Plasmon frequency is shown in Figure 1.

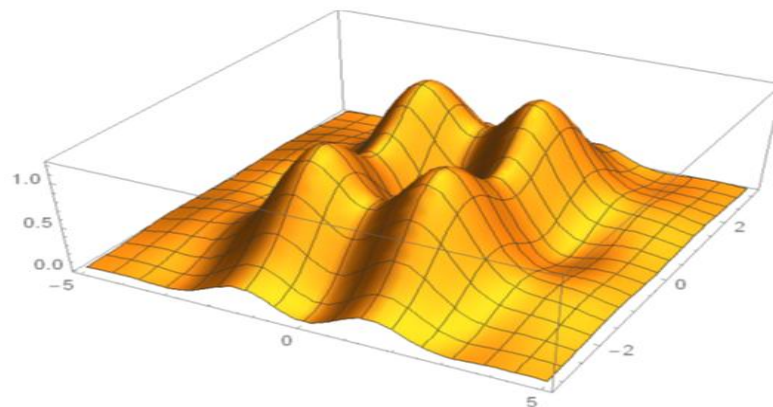


Figure-1. Maximum increase in temperature for Promethium nanospheres [3, 16].

According to the graph, it can be seen that the generated heat is increased by increase in nanoparticles size. For 100 (nm) nanoparticles (sphere with 50 (nm) radius), the maximum increase in temperature is 83 (K). When nanoparticles size reaches to 150 (nm), increase in temperature is increased in spite of increase in extinction coefficient. In order to find the reason of this fact, ratio of absorption to extinction for various nanospheres in Plasmon frequency is shown in Figure 2.

Figure 2 shows that increasing the size of nanospheres leads to decrease in ratio of light absorption to total energy of descendent light so that for 150 (nm) nanosphere, scattering is larger than absorption. It seems that although increase in nanoparticles size leads to more dissipation of descendent light, the dissipation is in the form of scattering and hence, it cannot be effective on heat generation.

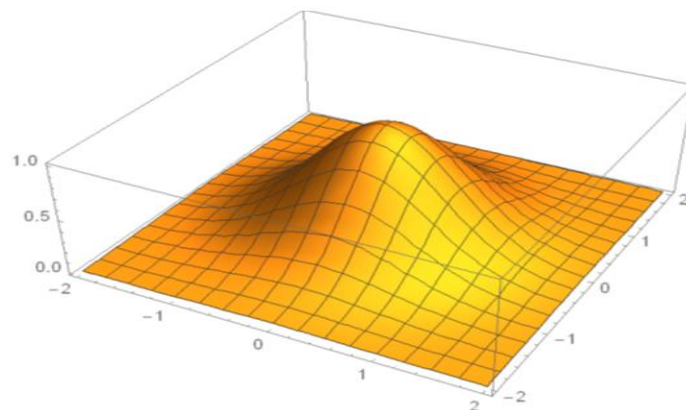


Figure-2. Variations of absorption to extinction ratio and scattering to extinction ratio for Promethium nanospheres with various radiuses [3, 16].

Heat distribution [Figure 3](#) shows that temperature is uniformly distributed throughout the nanoparticles which are due to high thermal conductivity of Promethium.

In this section, core-shell structure of Promethium and silica is chosen. The core of a nanosphere with 45 (nm) radius and silica layer thickness of 5, 10, 15, 20, 25, 30, 35, 40, 45 and 50 nanometers are considered. The results show that increase in silica thickness leads to increase in extinction coefficient and shift in Plasmon wavelength of nanoparticles, to some extent.

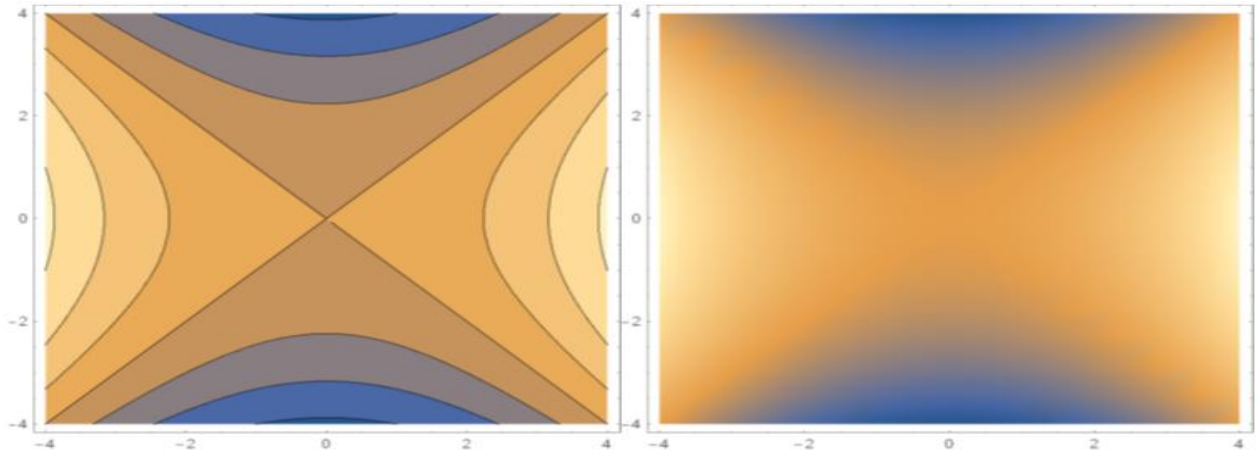


Figure-3. Maximum increase in temperature for spherical nanoparticles with radius of 45 (nm) at Plasmon wavelength of 685 (nm) [3, 16].

According to [Figure 4](#), silica shell causes to considerable increase in temperature of Promethium nanoparticles but by more increase in silica thickness, its effects are decreased. Heat distribution [Figure 5](#) shows that temperature is uniformly distributed throughout metallic core as well as silica shell. However, silica temperature is considerably lower than core temperature due to its lower thermal conductivity. In fact, silica layer prohibits heat transfer from metal to the surrounding aqueous environment due to low thermal conductivity and hence, temperature of nanoparticles has more increase in temperature. Increasing the thickness of silica shell leads to increase in its thermal conductivity and hence, leads to attenuate in increase in nanoparticles temperature.

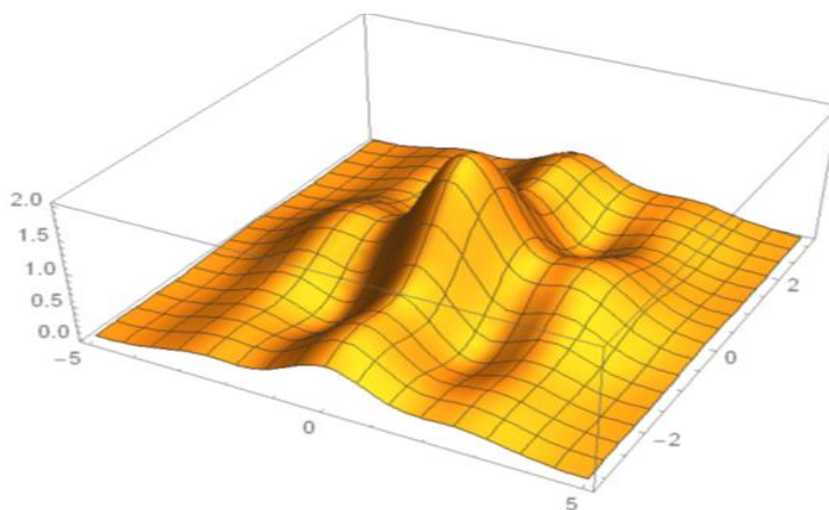


Figure-4. Maximum increase in temperature for core-shell Promethium nanospheres with various thicknesses of silica shell [3, 16].

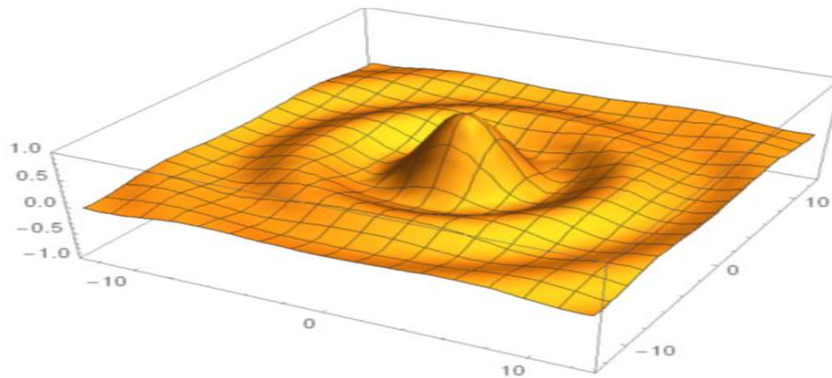


Figure-5. Maximum increase in temperature for core-shell nanoparticles with radius of 45 (nm) and silica thickness of 10 (nm) at Plasmon wavelength of 701 (nm) [3, 16].

Figure 6 is drawn. This graph shows that variation of nanorod dimension ratio leads to considerable shift in Plasmon wavelength. This fact allows regulating the Plasmon frequency to place in near IR zone. Light absorption by body tissues is lower in this zone of spectrum and hence, nanorods are more appropriate for optothermal human cancer cells, tissues and tumors treatment methods.

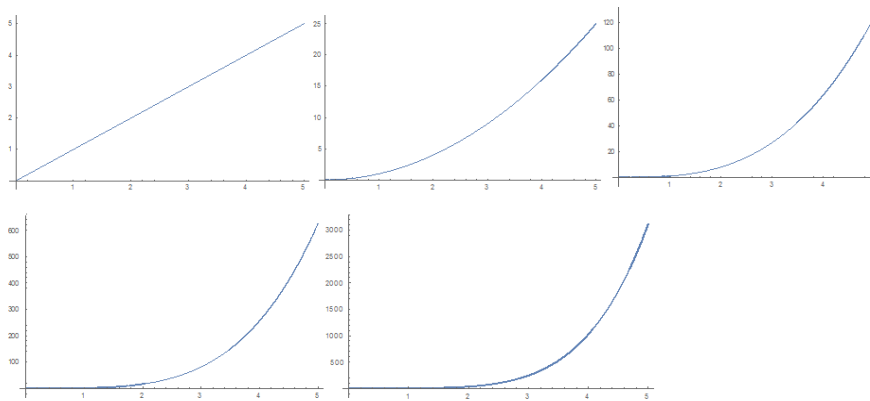


Figure-6. Extinction cross section area for Promethium nanorods with effective radius of 45 (nm) and various dimension ratios [3, 16].

Variations of temperature in Promethium nanorods with two effective radius and various dimension ratios are shown in Figure 7. By increase in length (a) to radius (b) of nanorod, temperature is increased.

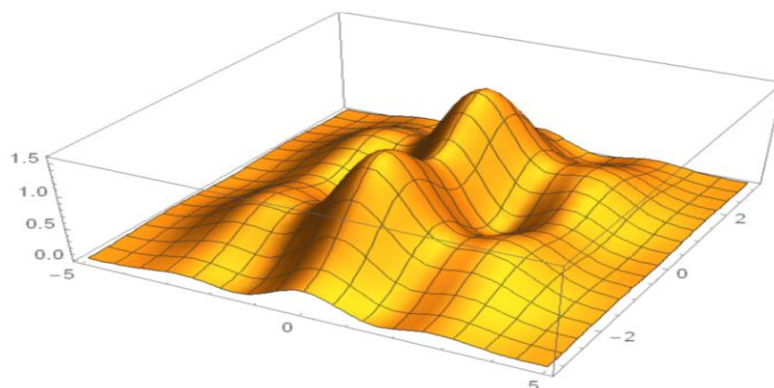


Figure-7. Maximum increase in temperature for nanorods with effective radius of 20 and 45 (nm) and various dimension ratios [3, 16].

4. CONCLUSION AND SUMMARY

The calculations showed that in Promethium nanoparticles, light absorption in Plasmon frequency causes to increase in temperature of the surrounding environment of nanoparticles. In addition, it showed that adding a thin silica layer around the Promethium nanospheres increases their temperatures. Calculations of nanorods showed that due to ability for shifting surface Plasmon frequency toward longer wavelength as well as more increase in temperature, this nanostructure is more appropriate for medical applications such as optothermal human cancer cells, tissues and tumors treatments.

5. ACKNOWLEDGEMENTS

We acknowledge Ms. Isabelle Villena for instrumental support and Dr. Michael N. Cocchi for constructing graphical abstract figures. We gratefully acknowledge Prof. Dr. Christopher Brown for proof reading the manuscript. Synchrotron beam time was awarded by the National Synchrotron Light Source (NSLS-II) under the merit-based proposal scheme.

REFERENCES

- [1] J. Ferlay, I. Soerjomataram, R. Dikshit, S. Eser, C. Mathers, M. Rebelo, D. M. Parkin, D. Forman, and F. Bray, "Cancer incidence and mortality worldwide: sources, methods and major patterns in GLOBOCAN 2012," *International Journal of Cancer*, vol. 136, pp. E359-E386, 2015. Available at: <https://doi.org/10.1002/ijc.29210>.
- [2] P. Yavari, T. Hislop, C. Bajdik, A. Sadjadi, M. Nouraie, M. Babai, and R. Malekzadeh, "Comparison of cancer incidence in Iran and Iranian immigrants to British Columbia, Canada," *Asian Pacific Journal of Cancer Prevention: APJCP*, vol. 7, pp. 86-90, 2006.
- [3] A. Heidari and C. Brown, "Study of composition and morphology of cadmium oxide (CdO) nanoparticles for eliminating cancer cells," *Journal of Nanomedicine Research*, vol. 2, p. 20, 2015. Available at: <https://doi.org/10.15406/jnmr.2015.02.00042>.
- [4] C. M. Perou, S. S. Jeffrey, M. Van De Rijn, C. A. Rees, M. B. Eisen, D. T. Ross, A. Pergamenschikov, C. F. Williams, S. X. Zhu, and J. C. Lee, "Distinctive gene expression patterns in human mammary epithelial cells and breast cancers," *Proceedings of the National Academy of Sciences*, vol. 96, pp. 9212-9217, 1999. Available at: <https://doi.org/10.1073/pnas.96.16.9212>.
- [5] F. Bertucci, P. Finetti, and D. Birnbaum, "Basal breast cancer: A complex and deadly molecular subtype," *Current Molecular Medicine*, vol. 12, pp. 96-110, 2012. Available at: <https://doi.org/10.2174/156652412798376134>.
- [6] Y. Akasbi, S. Bennis, F. Abbass, K. Znati, K. A. Joutei, A. Amarti, and O. E. Mesbahi, "Clinicopathological, therapeutic and prognostic features of the triple-negative tumors in moroccan breast cancer patients (experience of Hassan II university hospital in Fez)," *BMC Research Notes*, vol. 4, pp. 500-500, 2011. Available at: <https://doi.org/10.1186/1756-0500-4-500>.
- [7] L. A. Carey, C. M. Perou, C. A. Livasy, L. G. Dressler, D. Cowan, K. Conway, G. Karaca, M. A. Troester, C. K. Tse, and S. Edmiston, "Race, breast cancer subtypes, and survival in the Carolina breast cancer study," *Jama*, vol. 295, pp. 2492-2502, 2006.
- [8] R. Dent, M. Trudeau, K. I. Pritchard, W. M. Hanna, H. K. Kahn, C. A. Sawka, L. A. Lickley, E. Rawlinson, P. Sun, and S. A. Narod, "Triple-negative breast cancer: Clinical features and patterns of recurrence," *Clinical Cancer Research*, vol. 13, pp. 4429-4434, 2007. Available at: <https://doi.org/10.1158/1078-0432.ccr-06-3045>.

- [9] K. F. Trivers, M. J. Lund, P. L. Porter, J. M. Liff, E. W. Flagg, R. J. Coates, and J. W. Eley, "The epidemiology of triple-negative breast cancer, including race," *Cancer Causes & Control*, vol. 20, pp. 1071-1082, 2009. Available at: <https://doi.org/10.1007/s10552-009-9331-1>.
- [10] K. C. Amirikia, P. Mills, J. Bush, and L. A. Newman, "Higher population-based incidence rates of triple-negative breast cancer among young African-American women: Implications for breast cancer screening recommendations," *Cancer*, vol. 117, pp. 2747-2753, 2011. Available at: <https://doi.org/10.1002/cncr.25862>.
- [11] A. M. Gonzalez-Angulo, K. M. Timms, S. Liu, H. Chen, J. K. Litton, J. Potter, J. S. Lanchbury, K. Stemke-Hale, B. T. Hennessy, and B. K. Arun, "Incidence and outcome of BRCA mutations in unselected patients with triple receptor-negative breast cancer," *Clinical Cancer Research*, vol. 17, pp. 1082-1089, 2011. Available at: <https://doi.org/10.1158/1078-0432.ccr-10-2560>.
- [12] O. Gluz, C. Liedtke, N. Gottschalk, L. Pusztai, U. Nitz, and N. Harbeck, "Triple-negative breast cancer—current status and future directions," *Annals of Oncology*, vol. 20, pp. 1913-1927, 2009. Available at: <https://doi.org/10.1093/annonc/mdp492>.
- [13] B. G. Haffty, Q. Yang, M. Reiss, T. Kearney, S. A. Higgins, J. Weidhaas, L. Harris, W. Hait, and D. Toppmeyer, "Locoregional relapse and distant metastasis in conservatively managed triple negative early-stage breast cancer," *Journal of Clinical Oncology*, vol. 24, pp. 5652-5657, 2006. Available at: <https://doi.org/10.1200/jco.2006.06.5664>.
- [14] S. Dawson, Provenzano E, and C. Caldas, "Triple negative breast cancers: Clinical and prognostic implications," *European Journal of Cancer*, vol. 45, pp. 27-40, 2009.
- [15] R. Coleman, "Skeletal complications of malignancy," *Cancer*, vol. 80, pp. 1588-1594, 1997.
- [16] A. Heidari and C. Brown, "Study of surface morphological, phytochemical and structural characteristics of Rhodium (III) Oxide (Rh₂O₃) Nanoparticles," *International Journal of Pharmacology, Phytochemistry and Ethnomedicine*, vol. 1, pp. 15-19, 2015.

Online Science Publishing is not responsible or answerable for any loss, damage or liability, etc. caused in relation to/arising out of the use of the content. Any queries should be directed to the corresponding author of the article.